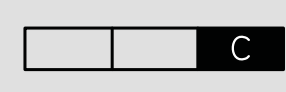
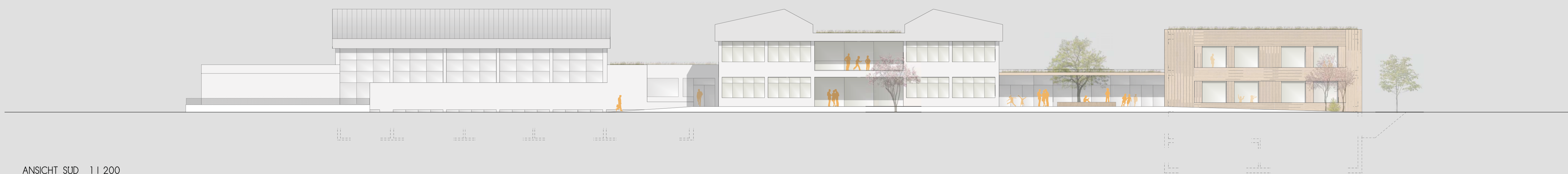


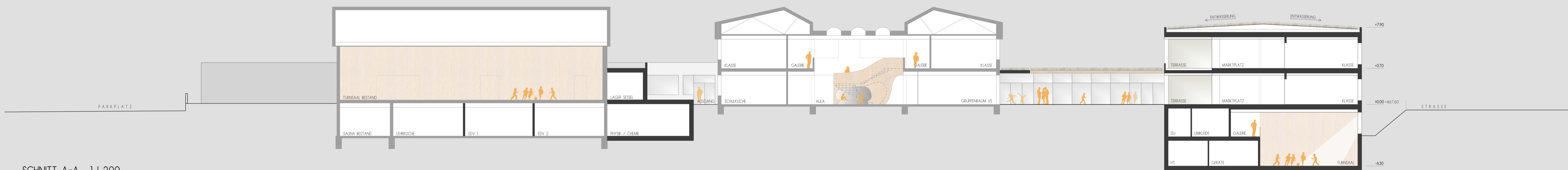
ARCHITEKTURWETTBEWERB
NEUBAU DER VOLKSSCHULE UND SANIERUNG DER MITTELSCHULE MUNDERFING



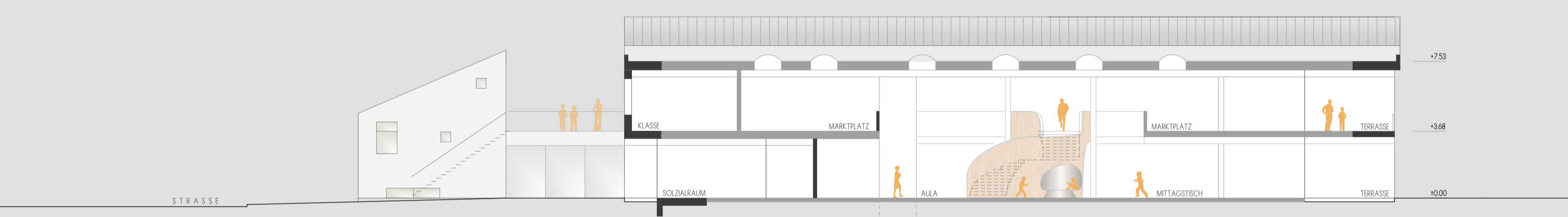
ANSICHT NORD 1 | 1200



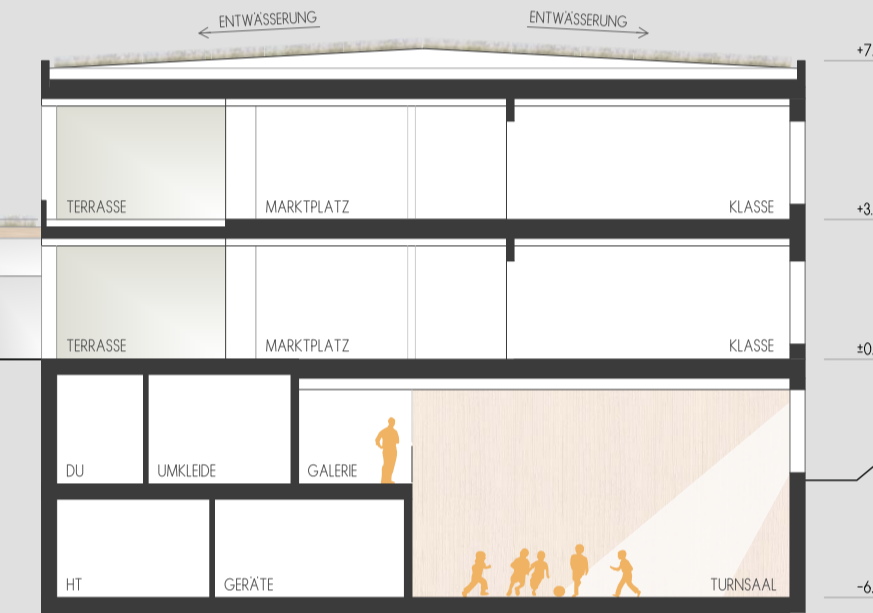
ANSICHT SUD 1 | 1200



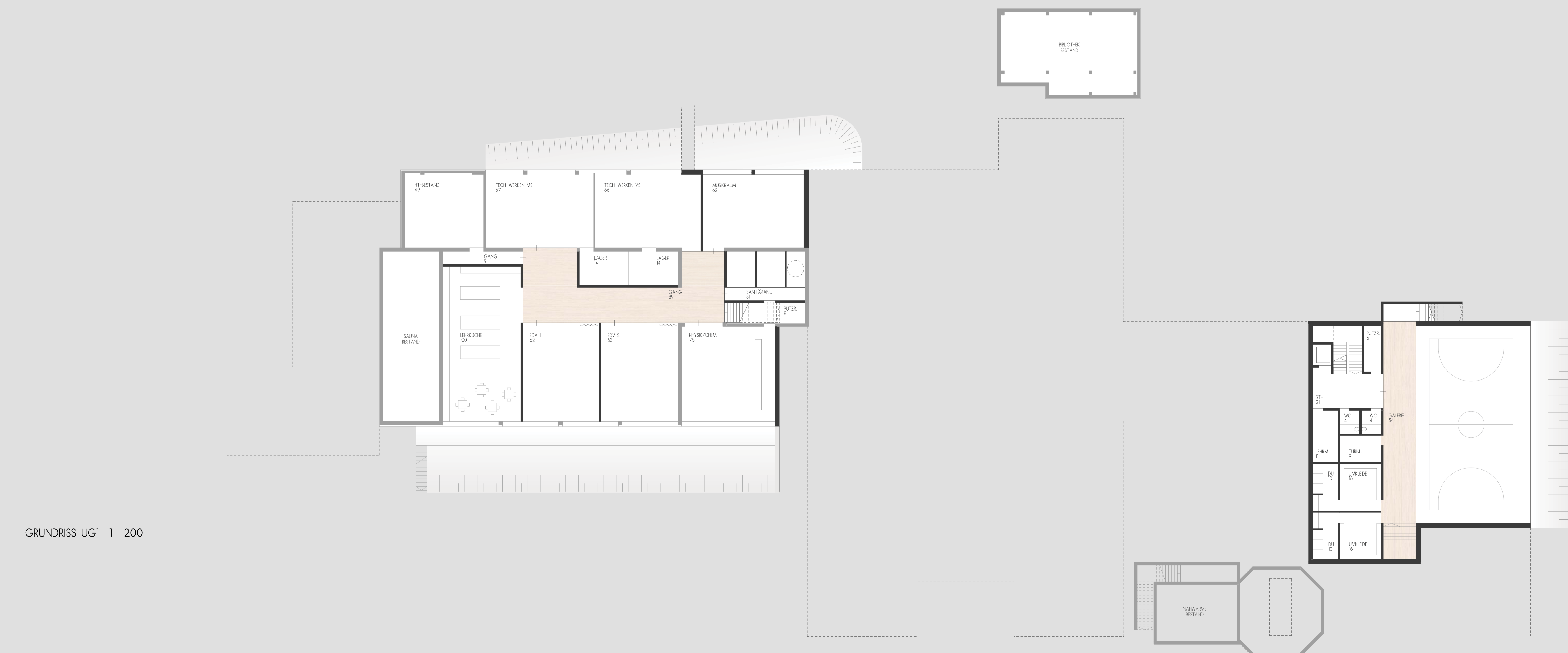
SCHNITT A-A 1 | 1200



SCHNITT 2-2 1 | 1200



GRUNDRISS UG2 1 | 1200



GRUNDRISS UG1 1 | 1200